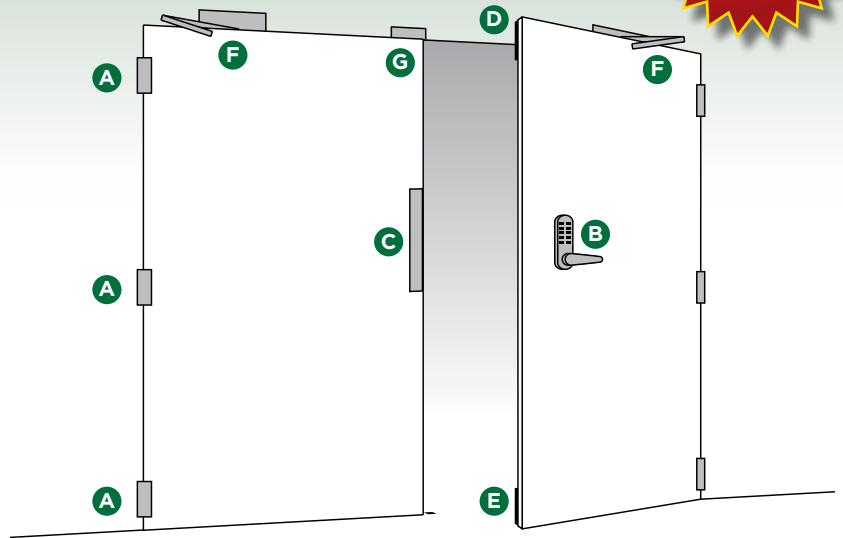


Bin and Cycle Store Door Ironmongery

Secure by Design compliant Bin and Cycle Store Door Ironmongery

Greenmaster provide this exclusive package of door ironmongery products designed for communal bin and cycle stores. Our package meets the criteria of Secure by Design.



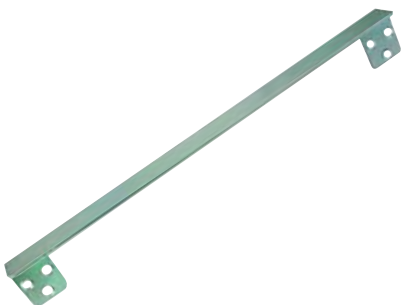
A Satin Stainless Steel Grade 13 Security Ball Bearing SBD Hinge

This Secure by Design hinge has an additional security peg that locks into place when the door is closed. This prevents the door from being lifted from its hinges if the hinge itself is attacked. Very effective additional and hidden security which makes it an excellent choice for high specification commercial projects, or where security is paramount.



B Heavy Duty Push Button Lock

Mechanical push-button lock with heavy duty tubular latch. When the right code is entered, the handle will retract the latch and the door can open. The spring loaded latch bolt automatically locks the door on closing. Stainless steel PVD, weather-resistant, low maintenance finish. Also suitable for use in commercial buildings, hospitals, schools, hotels and leisure, warehouses, industrial buildings and transportation.



C Grey Anti-Thrust Lock Guard Plate

Narrow style plate, ideal for commercial applications where locks are in a vulnerable area. Side fixing screws.

Bin and Cycle Store Door Ironmongery

Package includes:

	Outward opening		Inward opening	
	Double Door	Single Door	Double Door	Single Door
A	3	2	3	2
B	1	1	1	1
C	1	1	n/a	n/a
D	1	n/a	1	n/a
E	1	1	1	1
F	2	1	2	1
G	1	n/a	1	n/a



D 200mm BJP Chain Bolt

Spring loaded chain bolt for top of fixed leaf. Angled shoot so will engage automatically when door is closed.

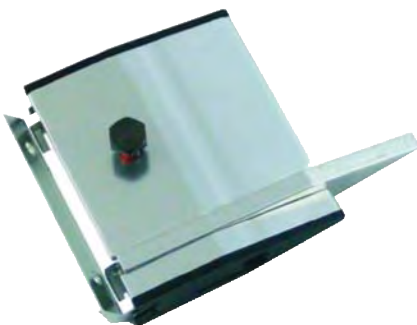
E 200mm BJP Foot Bolt

Foot bolt to secure bottom of fixed leaf. Ground socket available.



F Adjustable Power Door Closer 2 - 4 SE

Adjustable power SE overhead door closer. To suit door up to 80kg. Incorporates backcheck and delayed action.



G SAA Wedge Type Door Selector

The door selector holds the first opening leaf open until the second leaf has closed ensuring the correct closing sequence.